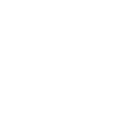




SWP
Water Pumps



Monoblock centrifugal pumps



Approvals



DJSM Pump

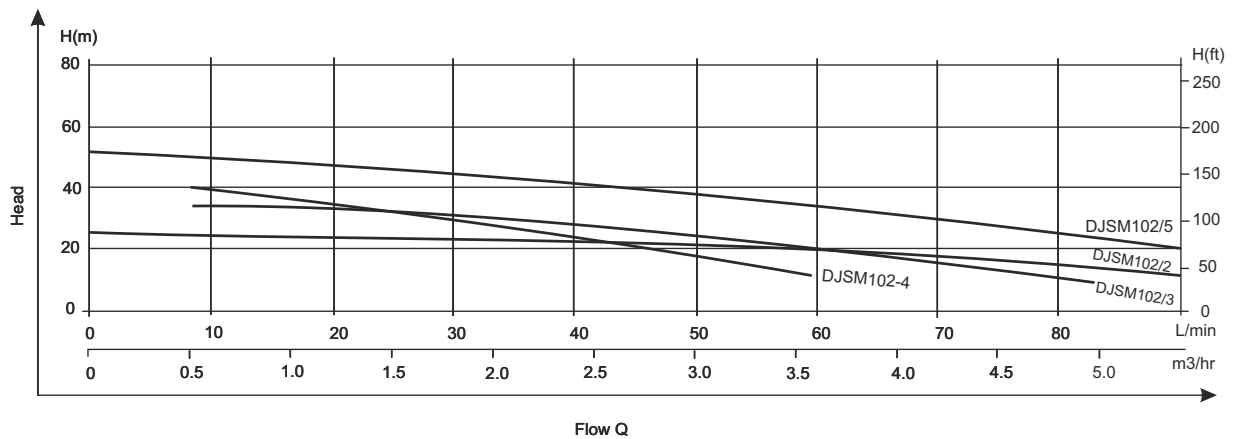
- 1- Cast Iron Pump body
- 2- Stainless steel /PPO impeller
- 3- AISI 304 shaft
- 4- Max Liquid temperature: +60°C



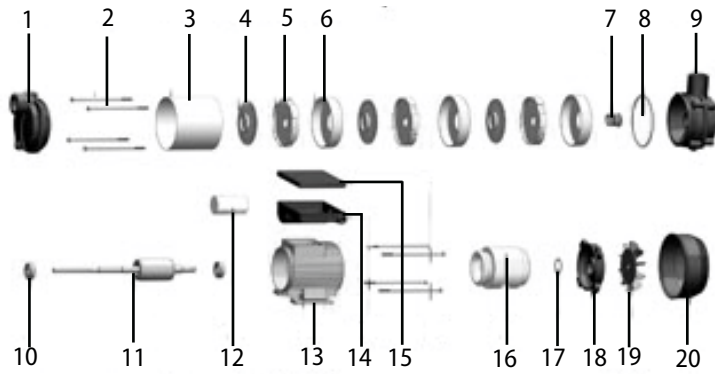
Electric Motor

- 1- C & U bearing
- 2- Motor with copper winding
- 3- Built-in thermal protector for single phase motor
- 4- Insulation class : B
- 5- Protection Class: IP44
- 6- Max ambient temperature: +40° C

PUMP TYPE	POWER		INLET/OUTLET	MAX.FLOW L/min	MAX.HEAD m	G.W kg	PACKING DIMENSION mm	QTY set
	Kw	HP						
DJSM102/2	0.6	0.8	1"x1"	90	23	9.5	395x200x220	1610
DJSM102/3	0.9	1.3	1"x1"	90	32	10	420x200x220	1520
DJSM102/4	1.1	1.5	1"x1"	60	41	10.5	445x200x220	1430
DJSM102/5	1.3	1.8	1"x1"	90	50	11.5	470x200x220	1350



Structure



NO.	NAME	NO.	NAME
1	Pump body	11	Rotor
2	Hexagon headed bolt	12	Capacitor
3	Outer castor casing	13	Base
4	Impeller	14	Capacitor box
5	Diffuser	15	Capacitor cover
6	Discharge bowl	16	Stator
7	Mechanical seal	17	Wave washer
8	"O" Ring	18	Rear end cover
9	Connect	19	Fan
10	Bearing	20	Fan cover





SWP
Neufeldstrasse 15
3605 Thun - Gwatt
Switzerland
Tel. +41 33 35 2550